



Oaklea
Supporting stronger communities

right2work

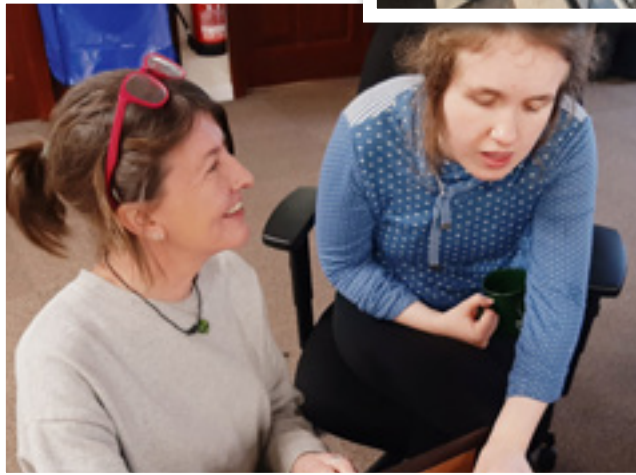
 West Cumbria
& Furness
Council

Learning2Live

> a project that combines **learning** and a **place to live**

Learning2Live

> a project that combines **learning** and **a place to live**



Contents

Welcome	4
Oaklea Trust	5
7 Keys to Citizenship	6
Right2Work	7
Referral Route	8
Opportunities For Learning	9
The Open Awards - Core Curriculum	10
My Life, My Choices	11
Pastoral Support	12
The Learning Environment	13
The Local Area	14



Learning2Live

> a project that combines **learning** and **a place to live**



Welcome

Welcome to Learning2Live, a specialist provision that offers a high standard of education and care for students aged 18 to 25 years with an Education Health and Care Plan.

The Oaklea Trust and Right2work have developed a course that is specifically designed to develop young people's personal, social and transferable skills, to enable them to better live and work within their local communities.

Our Learning2Live project is situated in Windermere, in the heart of the Lake District, where we will be supporting Learners over the course of the three-year programme to gain the skills and confidence they need to move onto the next stage in their lives. Whether that is gaining employment, moving towards more independent living or progressing to further study.

Our commitment to providing high quality and person-centred education and care uses specialist approaches and individual learning programmes, utilising our unique on-site learning and supported living facilities.

Learners on the programme will participate in a full and active curriculum: promoting, supporting and challenging them to make progress and achieve their fullest potential.

Our person-centred approach provides individualised learning programmes developed to effectively match their needs, personal decisions and aspirations with a focus on daily living skills, vocational qualifications or more independent living.

We look forward to welcoming you to Learning2Live.

Clive Wigley, CEO





^ Oaklea Trust & Right2Work
Working Behaviours

Oaklea Trust

Overview

The Oaklea Trust is a charitable organisation (Registered in England No. 1091722) whose sole purpose is to support and care for people and communities so they can learn, develop and thrive. Our vision is to deliver the finest opportunities in the kindest possible way.

Our values are based on the Citizenship Model. We are an innovative and responsive organisation that aims to build resilience and character in those we support and give the confidence and life skills they need to live, learn, work and achieve.

Oaklea Mission Statement

“To support and care for people and communities so they can learn, develop and thrive.”





Oaklea - 7 Keys to Citizenship

We base our support plans on the 7 Keys to Citizenship:

Purpose Setting your own direction. We all need a purpose, what do we want from our lives and how do we want to live?

Freedom Taking charge of your life. Having purpose and being free to express it and having the choices and freedom to make decisions.

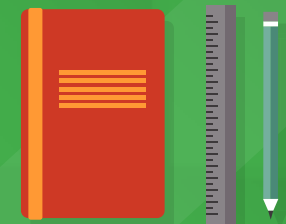
Money Having enough to live well. Money enables independence and requires responsibility.

Home Having a place where we belong. We all need somewhere to call home where we feel safe.

Help Giving and receiving help. It is an interchange not just about receiving: giving is important too.

Life Living a healthy and fulfilling life and making a difference. Being a citizen entitles you to enjoy all legal rights and expects you to fulfil duties.

Love Having friends and family, love and being loved. This includes sex, marriage, friends and human relationships.



Ability
 Organisation
 Society
 Innovation
 Independence
 Fulfilling
 Support
 Experience
 People
Citizenship
 Positive Vision
 Partnership
 Principles
 Control
 Charity
 Contribution
 Quality of Life

Right2Work

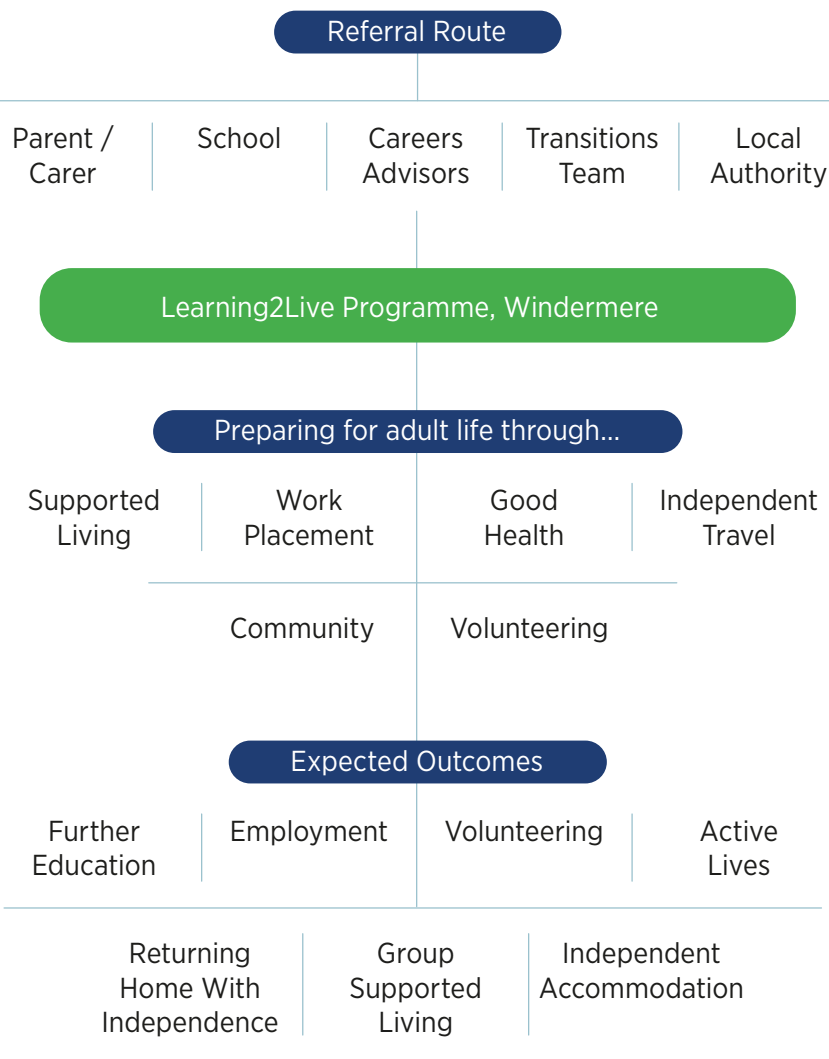
Overview

Right2Work is a Community Interest Company and wholly-owned subsidiary of The Oaklea Trust. Right2Work seeks to promote individual's personal and social development and enable them to have a voice and influence and a place in their communities and society as a whole.



Learning2Live

> a project that combines **learning** and **a place to live**



Referral Route

Preparing our Learners for adult life, we focus on enabling Learners to develop their functional, vocational and personal skills and to experience community living.

We have established, strong links with local organisations and employers that support us in arranging community-based learning, leisure, volunteering, social enterprise and work experience opportunities.



Eligibility Criteria

- In receipt of an Educational Health Care Plan (EHCP)
- Aged 18-25, Resident of Westmorland & Furness (W&F) (awaiting confirmation re Cumberland Council)
- Learners referred by, or have their application and funding supported by, W&F Council
- Learners have a desire to work towards employment
- Learners being able to work towards an entry level 3 qualification
- Learners being able to successfully access a Supported Internship

Initial enquiries about the programme can be made to Oaklea Head Office. However, we will discuss with you how to contact your Adult Social Care Team or Transitions Team, to coordinate your application and ensure that your personal outcomes included in your EHCP can be met by the programme.





Opportunities For Learning

Learning2Live offers a wide variety of opportunities for learning. The three year programme will support six Learners, living and learning together in a shared house within the local community to:

- **Manage my home**
- **Manage my self**
- **Engage with my community**

Learners will be supported over the three years through a mix of accredited and non-accredited learning. Through the Open Awards qualifications, Learners will progress in a range of subject areas that have been designed to promote independence in the home and their community.

We offer a broad and tailored curriculum for each student, to meet their developing needs. Over the three year course, Learners can expect to:

- Enjoy a range of subjects, so each Learner can develop their own curriculum to meet their needs
- Develop independent living skills through a practical and community based curriculum designed to build confidence in a range of settings, including work placements.
- Develop good communication skills
- Develop a sense of self, with community living and working in mind
- Be challenged in the pursuit of personal development
- Develop confidence
- Gain relevant and recognised qualifications
- Enjoy a choice of additional activities



The Open Awards

The Open Awards offer a choice of accredited qualifications that are relevant to the Learners personal development. There are no age restrictions and no prior achievements required and yet, alongside Right2Works first class reputation and networks, the Open Awards offer accredited and meaningful reassurance to employers that our Learners have plenty to offer in the workplace.



The Learning2Live curriculum is built around three key areas:

- Manage my Home
- Manage my Self
- Engaging with my Community

FOUNDATION YEAR

Independent Living

The Learning2Live team will ensure a smooth and successful transition onto the course. The focus on Independent Living will allow the care and support team to settle Learners into their new living and learning environment, set within quality facilities and with a choice of extra activities.

Accreditation Open Awards Entry level 3, Minimum of 150 guided learning hours.

Example Topics Personal Health & Hygiene, Staying Healthy, Managing Relationships, On-line basics, Food Hygiene and Meal Preparation, Domestic Skills, Safety & Security in the home, Money & Budgeting and Knowing your local area.

PLACEMENT YEAR

Skills for Further Learning & Employment

Learners can begin to further explore their own aspirations. This includes work experience and employment training.

Accreditation Open Awards Entry Level 3, Minimum of 130 guided learning hours.

Work Experience Up to 21 hours per week through a Supported Internship

Example Topics Personal Action Planning, Applying for Jobs & Courses, Curriculum Vitae Writing, Employment Skills, Job Search, Making Informed Career Choices, Preparing for an Interview, Preparing for Work, Problem Solving at Work and Health & Safety in the Workplace.

(Also to include modules specific to the Learner's employment aspirations.)

FINAL YEAR – MOVING ON

Skills for Further Learning & Employment

Learners will continue their personal development supported by their pastoral and academic support teams. Then the focus will shift towards our Learners preparing to move on from Learning2Live.

Accreditation Open Awards level 1 Certificate for Further Learning and Employment. Minimum of 130 guided learning hours.

Work Experience Up to 35 hours per week (paid or unpaid).

Example Topics Preparing to be a Good Tenant and Neighbour, Understand How to Apply for Housing, Understand How to Look After a New Home, Understand How to Look After Personal Health and Hygiene, Understanding Financial Products and Services, Personal Money Management and Planning a Move to a New Home.

My Life, My Choices



At Oaklea, the name we give to the plan which describes how we will support you is called “My Life, My Choices” (MLMC) and it includes:

- **Personal care**
- **Healthcare and medication**
- **Food and nutrition**
- **Practical and financial**
- **Social support**

It ensures you benefit from choice and control over your daily life, providing you with the opportunities to develop your personal skills, be healthy and receive support or care as and when you require.

You, or your chosen representative, will be asked to take part in putting this plan together. Both you and Oaklea will have a copy of the MLMC plan. The MLMC framework is owned by you, the Learner. Reviews of the content are held annually or sooner if there has been a change.

Learners will be supported by one of our dedicated Learning Support Assistants who will work with Learners on both a one to one and small group basis, within the community. Their home and other learning environments, to complete accredited qualifications and work towards outcomes, as detailed in their EHCP.

Acting as a mentor; Learning Support Assistants support Learners to develop confidence and social skills, through a variety of activities, such as: cooking, travel, accessing community facilities and supporting work placements, as well as providing personal care, enabling the Learner at all times.





Volunteering and Work Placements

As part of their course, Learners are offered the opportunity to access work experience, supported by one of our Learning Support Assistants.

Such opportunities offer Learners an insight into the world of work which may be one of their long-term goals, or may inspire them to think about seeking a work-related or ongoing learning placement, once their Learning2Live programme is complete.

Developing Skills and Interests

An important part of helping our Learners to achieve their personal best is encouraging them to develop interests and participate in a variety of activities and environments. All Learners will be supported to develop practical life skills within real life supported living and community environments. They will also be encouraged to participate in hobbies and leisure interests outside of the project, such as physical exercise or arts and crafts.

Health and Well-being

Learners are encouraged and supported to develop and maintain healthy lifestyles, with a focus on positive social and emotional well-being. Our well-being approach aims to promote healthy eating and lifestyles and increase health and well-being awareness

Oaklea are experienced in supporting Learners who have bespoke communication tools/approaches/strategies, which are specific to their needs. We are able to use a range of support options including now and next boards, individual: visual timetables and social stories.

We are able to use a range of bespoke approaches and strategies to suit individual environmental needs such as:

- Adaptive equipment e.g. specialist cutlery and shower seats
- Sensory equipment e.g. multi-sensory boxes and fidgets
- Sensory strategies to support Learners with their education sessions, daily activities, independence skills and sensory needs.

Transition Support

Transition into the programme from a school or home environment is key to our offer and we will work with Learners, their families and key supporters, to understand their needs and their goals and aspirations, before starting on the programme.

The same is true at the end of the three year programme, where our team will liaise with families and future support providers to facilitate smooth transitions, support Learners in the choice and transition to their new homes and communities and liaise with key external stakeholders.

Expressing Your Views

Learning2Live offers all Learners the opportunity to participate in a full and active extended curriculum: promoting, supporting and challenging them to make progress and achieve their fullest potential.

Our approach is inclusive: where everyone has an equal opportunity to express their views, make choices and be included. This is through individual sessions, group meetings, person centred plans and reviews, baseline and progress assessments, surveys and other opportunities for feedback.



The Learning Environment

We make every effort to create a welcoming family environment, where Learners feel safe and comfortable. The large traditional Lakeland stone and slated semi-detached house, located in beautiful Windermere in the heart of the Lake District, provides the ideal home base.

The house itself has been extended to now include a dedicated learning room. There is also ample communal space for Learners; and each Learner has their own en-suite bedroom.

We encourage our Learners to understand their rights and responsibilities as a tenant in this supported living setting, but also to personalise their bedrooms with posters, photos and personal belongings. Learners will also be supported and encouraged to take ownership of their home; keeping it clean and tidy.

Other onsite facilities include:

- Communal lounge
- Kitchen
- Dining room / 2nd recreational room
- Separate learning room
- Meeting room / private study room
- Front garden
- Laundry / utility room
- Private sunny courtyard
- Off street parking
- Access to ICT equipment
- Sports activities at local leisure centre
- Access to local amenities, interests and attractions





The Local Area

Windermere sits at the heart of The Lake District National Park, Cumbria, in the northwest of the UK. It's surrounded by mountain peaks and villages, including nearby Bowness-on-Windermere.

The open fells and countryside make the town a popular year-round destination for tourists to visit and is a fantastic place to live. The beautiful countryside has also inspired writers such as Beatrix Potter and William Wordsworth. The North of the village leads to Orrest Head, a hill with views across the lake and the fells beyond.

The town itself offers good local facilities that include: Booths and Sainsbury's supermarkets, a local library and a choice of cafes, pubs and restaurants.

Train links Windermere has its own railway station, a short walk from the house, located at the top of the village. From here you can take trains to Kendal and Oxenholme and pick up the West Coast mainline to London or Edinburgh.

Bus links There is a bus stop situated outside the house and a small bus station, located next to the railway station, where buses can be taken to the North Lakes or as far South as Lancaster.

Taxi links There are at least 3 taxi companies within Windermere, all providing quick and easy access to the local area.



Oaklea

Supporting stronger communities

Head Office The Oaklea Trust, Second Floor, East Wing,
Station House, Station Road, Kendal, Cumbria LA9 6RY

Telephone 01539 735 025

Email enquiries@oakleatrust.co.uk

Websites www.oakleatrust.co.uk www.right2work.co.uk

Registered Charity No. 1091722 Company No. 4416344

Oaklea
Supporting stronger communities

right2work



FOLLOW US

 facebook.com/oakleatrust

 twitter.com/oakleatrust

 instagram.com/oakleatrust

 linkedin.com/oakleatrust